

PLEASE CHECK WWW.MOLEX.COM FOR LATEST PART INFORMATION

Part Number: [1050340001](#)
Status: **Active**
Description: 2.54mm (.100") Pitch SIM Card Connector, Push-Push Type, 6 Circuits, SMT, with Solder Tabs, without Pegs, Housing Height 2.60mm (.102"), LeadFree

Documents:

[3D Model](#) [Product Specification PS-105034-001 \(PDF\)](#)
[Drawing \(PDF\)](#) [RoHS Certificate of Compliance \(PDF\)](#)

General

Product Family	Memory Card Sockets
Series	105034
Button Type	Push-Push
Comments	Housing Height: 2.60mm (.102"). Without Post
Component Type	Card Holder (Host)
Product Name	SIM
Type	N/A

Physical

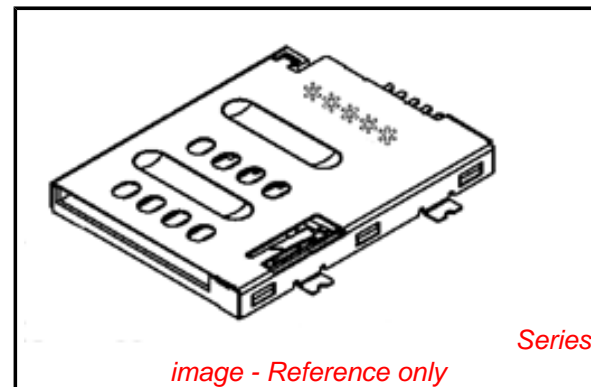
Card Detection Switch	No
Circuits (Loaded)	6
Circuits (maximum)	6
Color - Resin	Black
Durability (mating cycles max)	5,000
Ejector Button Side	No Ejector Button Present
Entry Angle	Horizontal
Keying to Mating Part	Yes
Material - Metal	Phosphor Bronze
Material - Plating Mating	Gold
Material - Plating Termination	Tin
Material - Resin	High Temperature Thermoplastic
PCB Locator	Yes
PCB Mounting Side	Normal
PCB Retention	Yes
Packaging Type	Embossed Tape on Reel
Pitch - Mating Interface (in)	0.100 In
Pitch - Mating Interface (mm)	2.54 mm
Pitch - Term. Interface (in)	0.100 In
Pitch - Term. Interface (mm)	2.54 mm
Plating min: Mating (µin)	30
Plating min: Mating (µm)	0.76
Plating min: Termination (µin)	50
Plating min: Termination (µm)	1.27
Ports	1
Temperature Range - Operating	-40°C to +85°C
Termination Interface: Style	Surface Mount

Electrical

Current - Maximum per Contact	0.5A
Shielded	Yes
Voltage - Maximum	50V DC

Solder Process Data

Duration at Max. Process Temperature (seconds)	3
Lead-free Process Capability	Reflow Capable (SMT only)
Max. Cycles at Max. Process Temperature	2



EU RoHS

**ELV and RoHS
Compliant**
**REACH SVHC
Contains SVHC: No**
**Halogen-Free
Status**

China RoHS



**Need more information on product
environmental compliance?**

Email productcompliance@molex.com
 For a multiple part number RoHS Certificate of Compliance, [click here](#)

Please visit the [Contact Us](#) section for any non-product compliance questions.

Search Parts in this Series

105034Series

Mates With

Standard SIM Card

Process Temperature max. C 250

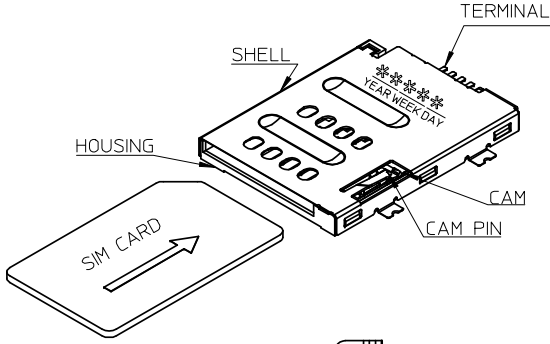
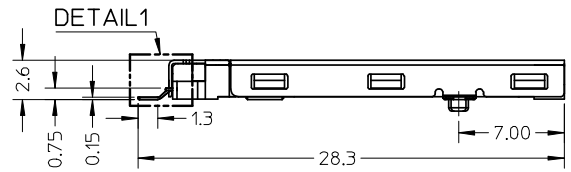
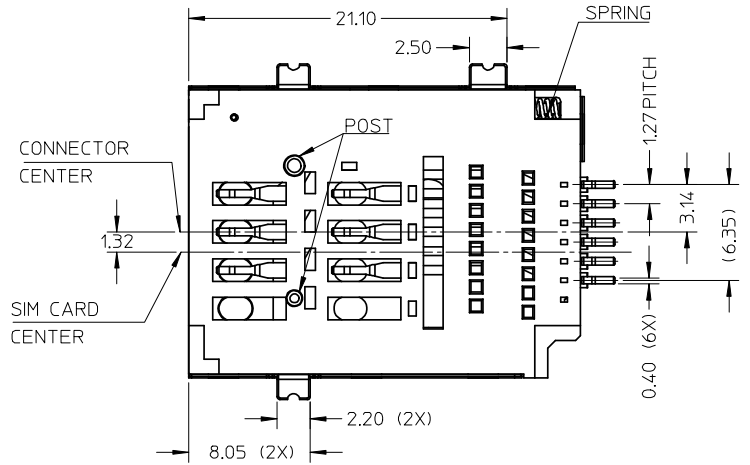
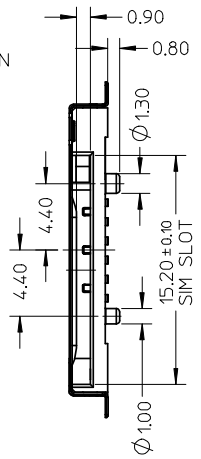
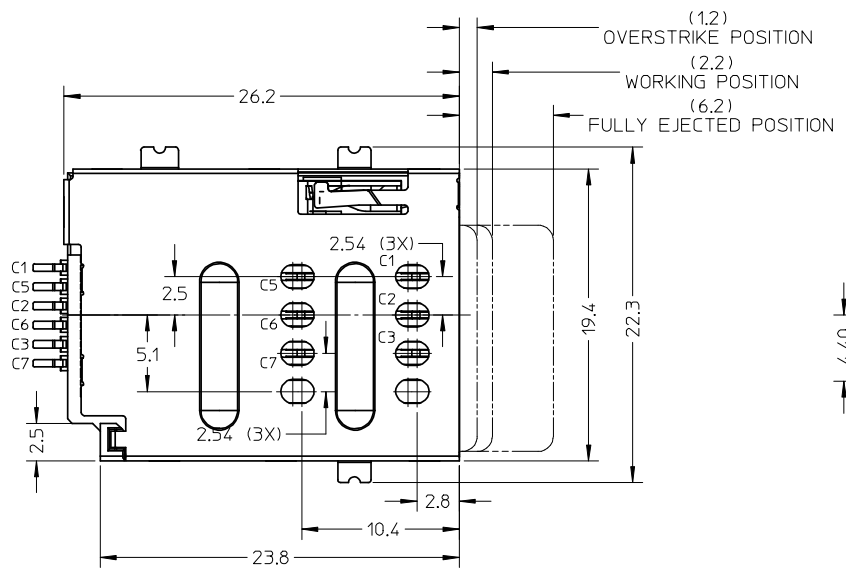
Material Info

Reference - Drawing Numbers

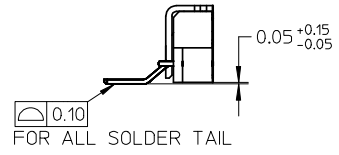
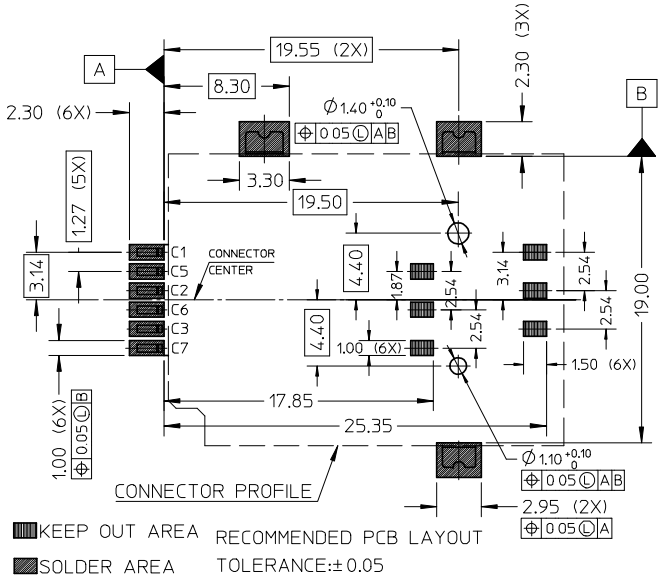
Product Specification PS-105034-001
Sales Drawing SD-105034-001

This document was generated on 03/30/2010

PLEASE CHECK WWW.MOLEX.COM FOR LATEST PART INFORMATION



NOTES:
 1.MATERIAL: CAM: NYLON, GLASS FILLED, UL94V-0, COLOR:BLACK
 HOUSING : LCP, GLASS FILLED, UL94V-0, COLOR:BLACK
 TERMINAL : PHOSPHOR BRONZE
 SHELL: STAINLESS STEEL
 SPRING: SWPB
 CAM PIN:STAINLESS STEEL
 2.FINISH: TERMINAL: 50µ MIN NICKEL UNDER PLATED
 30µ MIN GOLD PLATING ON CONTACT AREA
 50µ MIN TIN ON SOLDERING AREA
 SHELL: 50µ MIN NICKEL UNDER PLATED
 GOLD FLASH ON SOLDERING AREA
 SPRING: 60µ MIN NICKEL OVER 100µ MIN CUPRUM UNDERPLATED
 3.THIS PART IS LEAD-FREE.



1050341001	PUSH PUSH SIM WITH POST
1050340001	PUSH PUSH SIM WITHOUT POST
PART NO.	DESCRIPTION

RELEASED EC NO: SHZ008-0670 DRWN:YWANG91 2008/06/30 CHKD:YLZHU 2008/06/30 APPR:HWANG 2008/07/03	QUALITY SYMBOLS	GENERAL TOLERANCES (UNLESS SPECIFIED)	DIMENSION STYLE	SCALE	DESIGN UNITS	TITLE 2.6MM H, 6 PIN PUSH-PUSH SIM CONNECTOR MOLEX INCORPORATED SD-105034-001
	▼=0 ◻=0	mm INCH 4 PLACES ± --- ± --- 3 PLACES ± --- ± --- 2 PLACES ± 0.15 ± --- 1 PLACE ± 0.2 ± --- ANGULAR ± 2 °	MM ONLY	3:1	METRIC	
	DRAWN BY DATE YWANG 2007/12/21 CHECKED BY DATE YLZHU 2007/12/21 APPROVED BY DATE HWANG 2007/12/21	DRAFT WHERE APPLICABLE MUST REMAIN WITHIN DIMENSIONS	MATERIAL NO. SEE TABLE	TITLE 2.6MM H, 6 PIN PUSH-PUSH SIM CONNECTOR	THIRD ANGLE PROJECTION	
	SIZE A3	THIS DRAWING CONTAINS INFORMATION THAT IS PROPRIETARY TO MOLEX INCORPORATED AND SHOULD NOT BE USED WITHOUT WRITTEN PERMISSION	DOCUMENT NO. SD-105034-001	SHEET NO. 1 OF 1		